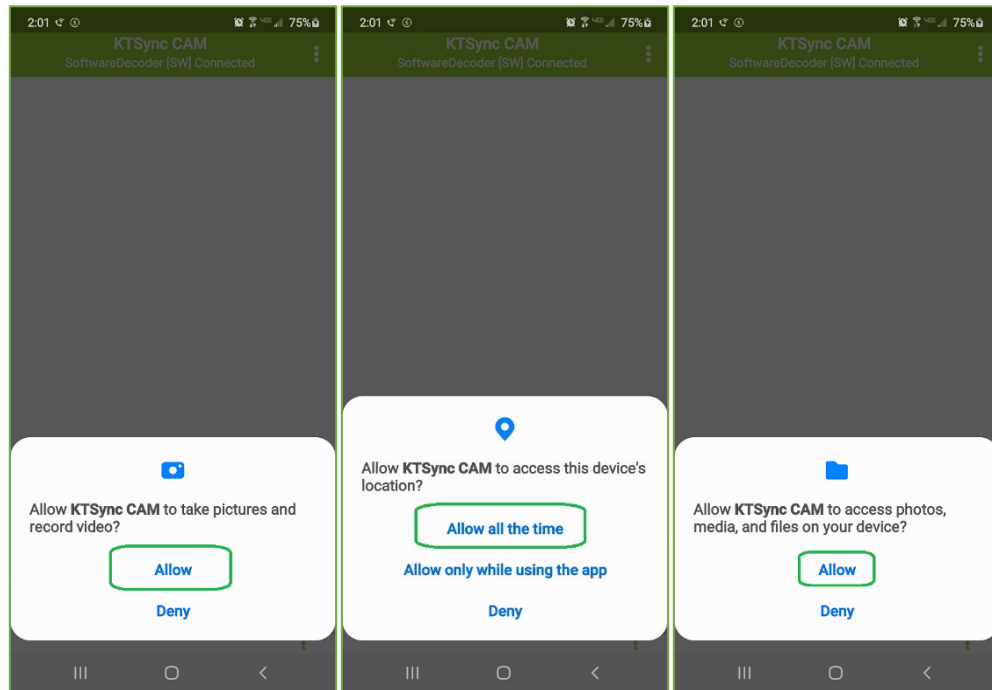


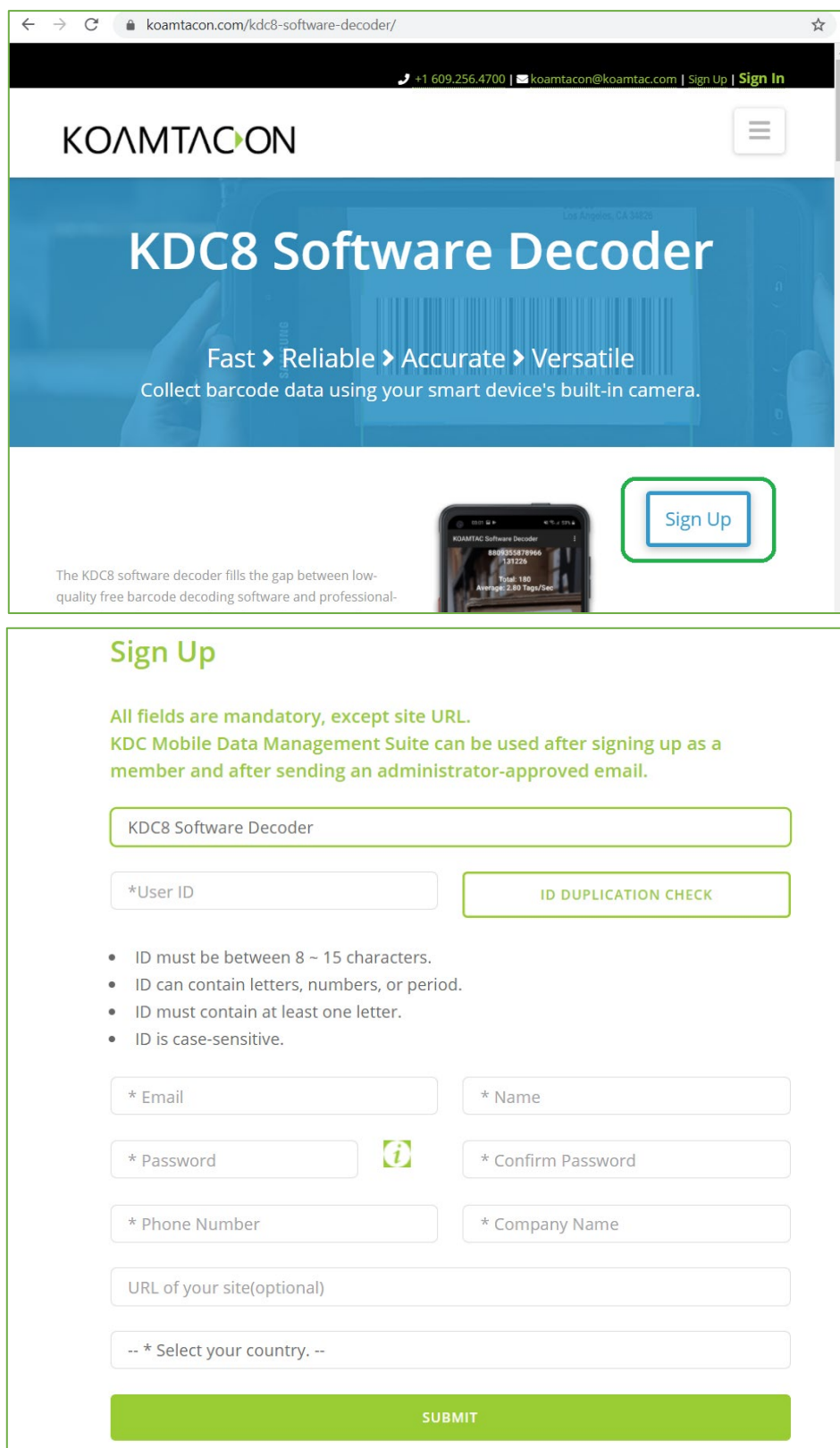
KTSync CAM (KTSync with Software Decoder)

➤ Download & Installation

1. Go to the Play Store and search for the app name "KTSync CAM". Download and install KTSync CAM on your phone.
2. When you open or run KTSync CAM for the first time on your phone, there are several permission popups, which require you to allow them all.



3. If you already purchased and used a (trial) license, skip to step 8. Otherwise, continue.
4. To use the software scanner, please purchase an activation code from <https://koamtacon.com/kdc8-software-decoder/>. Or you can obtain a 1-month free trial activation code from the same.
5. To receive the activation code, please complete the sign up process first.
6. Once you sign up and purchase the activation code per your plan (trial plan, monthly plan, yearly plan, or unlimited plan), the trial or purchased activation code will be sent to your email registered during sign up. (Please do not lose the activation code.)



The screenshot shows the KOAMTAC website's 'KDC8 Software Decoder' page. The page features a blue header with the KOAMTAC logo and a navigation bar with contact information. The main content area has a large blue banner with the text 'KDC8 Software Decoder' and 'Fast > Reliable > Accurate > Versatile'. Below the banner is a 'Sign Up' button. The sign-up form includes fields for 'KDC8 Software Decoder', '*User ID', '*Email', '*Password', '*Phone Number', and '*Company Name'. There is also a 'Sign Up' button and a 'SUBMIT' button. The form is titled 'Sign Up' and includes instructions: 'All fields are mandatory, except site URL. KDC Mobile Data Management Suite can be used after signing up as a member and after sending an administrator-approved email.'

Sign Up

All fields are mandatory, except site URL.
KDC Mobile Data Management Suite can be used after signing up as a member and after sending an administrator-approved email.

KDC8 Software Decoder

*User ID ID DUPLICATION CHECK

- ID must be between 8 ~ 15 characters.
- ID can contain letters, numbers, or period.
- ID must contain at least one letter.
- ID is case-sensitive.

* Email * Name

* Password * Confirm Password

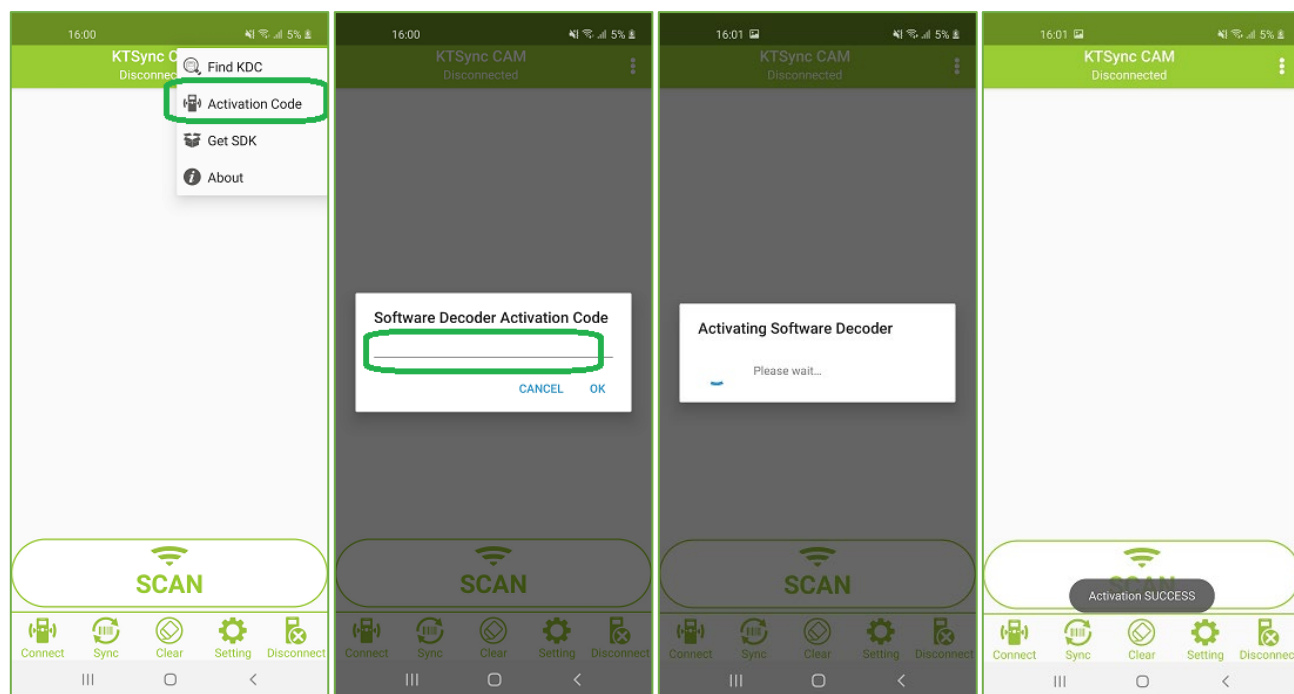
* Phone Number * Company Name

URL of your site(optional)

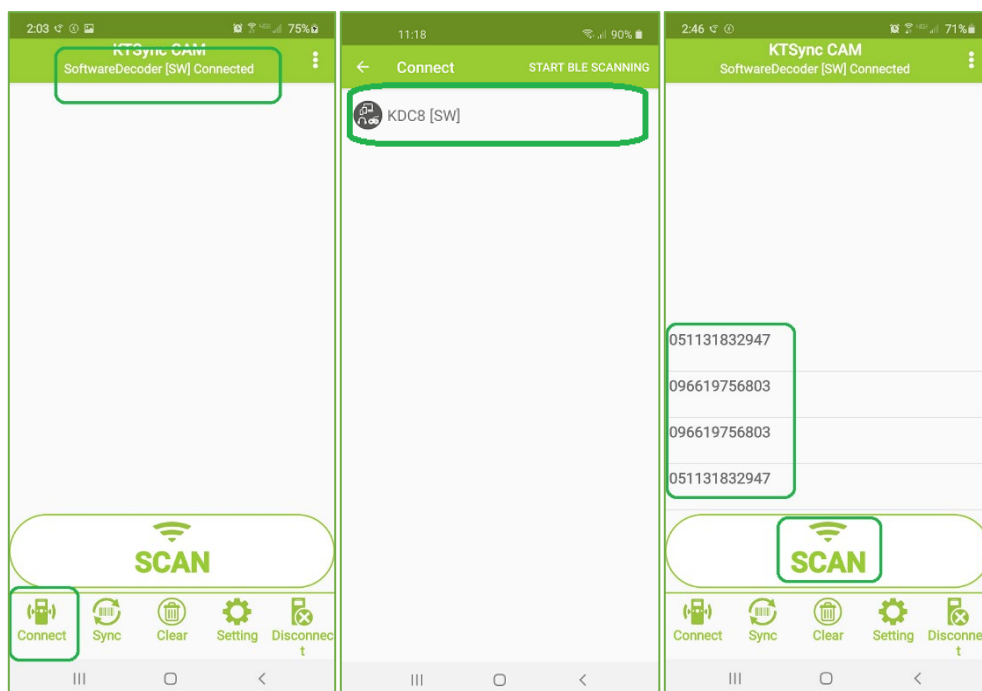
-- * Select your country. --

SUBMIT

7. Once you receive the activation code via email, register the activation code to KTSync CAM.

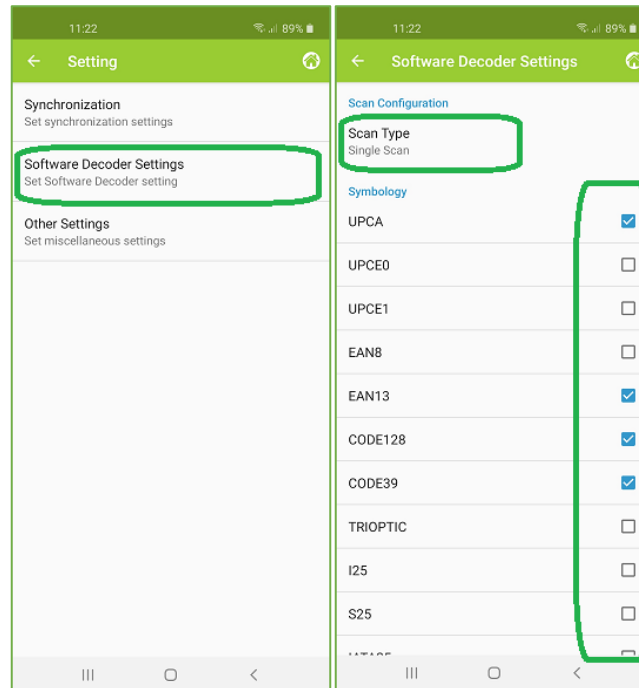


8. The phone/tablet will automatically connect to the KDC8 (SW Decoder).
9. If not connected automatically, tap the "Connect" menu icon at the bottom and select the correct device: **KDC8 [SW]** in this case.
10. If you see the connected message toward the top of the screen, you can scan with the app. For testing purposes, scan any barcode and see if it is displayed in KTSync.



➤ Options (Software Decoder Settings)

- If you navigate to Software Decoder Settings from the Settings menu icon, there are two options: Scan Type and Symbology
 - Scan Type:** you can scan a barcode one at a time (Single Scan) or you can continuously scan barcodes (Continuous Scan)
 - Symbology:** you can select or deselect any symbologies that you want to be read/ignored



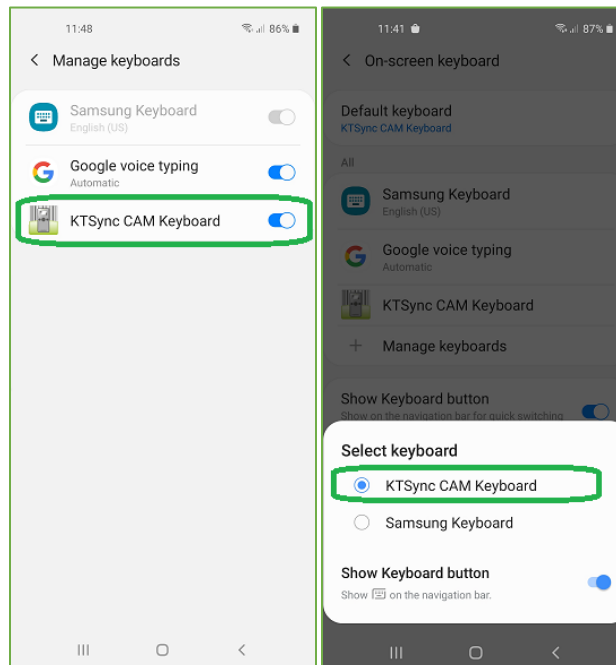
KTSync CAM Keyboard (On-screen Keyboard using KTSync CAM)

➤ Set up on-screen keyboard

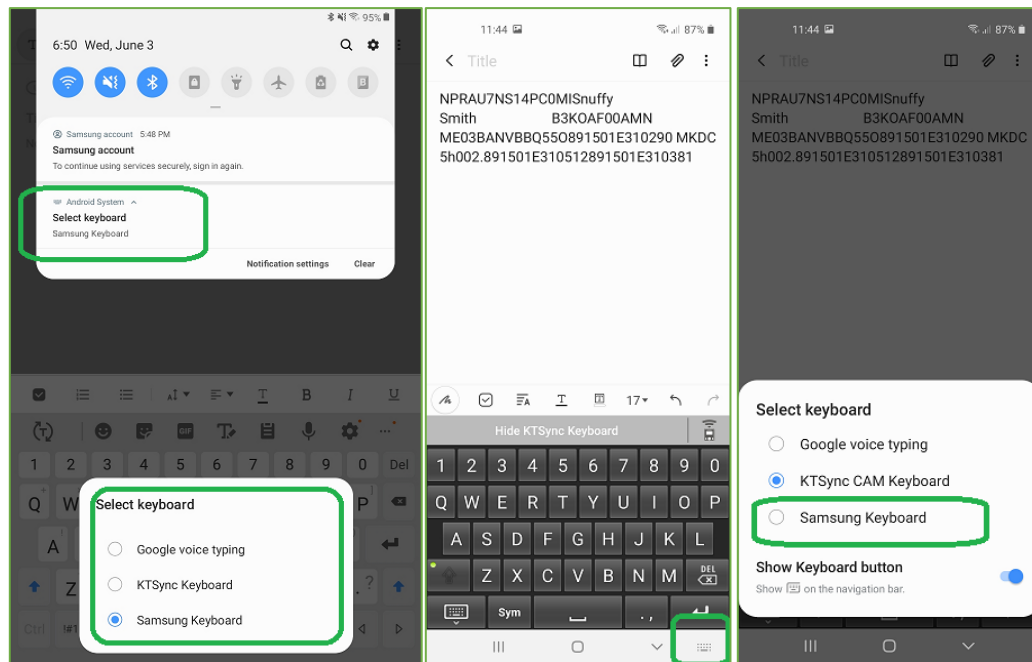
1. Go to your phone/tablet's Settings,

Settings > General management > Language and Input > On-screen keyboard > Manage keyboards

Find the KTSync CAM keyboard and enable it by sliding the button to the right. Go back to Language and Input or On-screen Keyboard depending on the phone/tablet's OS version. Then, go to Default Keyboard and change the default keyboard to the KTSync Keyboard.

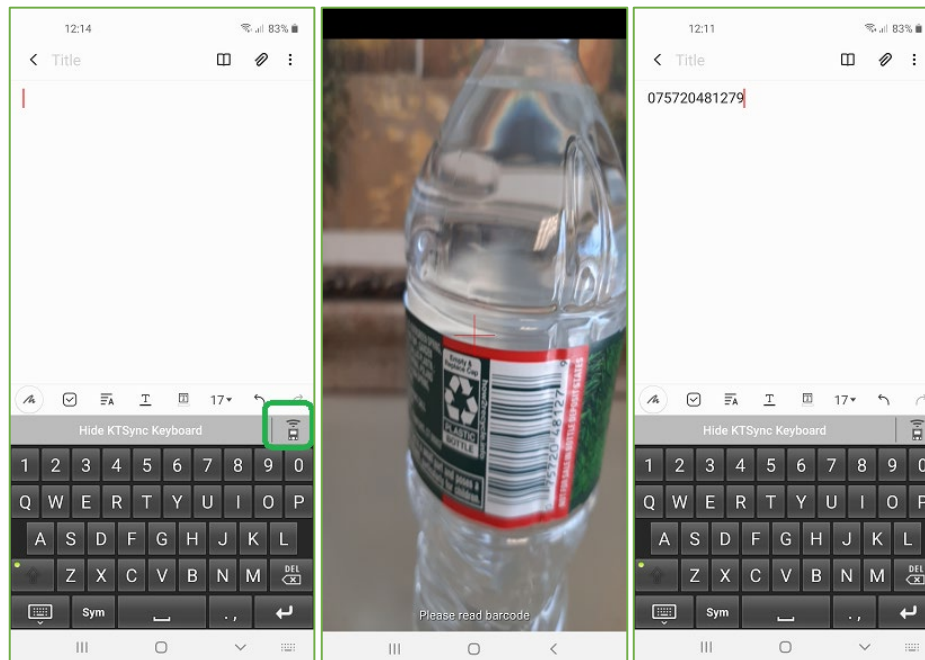


2. To switch back to the previous keyboard, simply change the default keyboard again. Or, when a text field is selected, swipe down from the top of the screen to bring up the notification panel. Select 'Select keyboard' and you can change the default keyboard from here. (Fig. 2) Or, select keyboard button from the navigation bar and you can change the default keyboard from here. (Fig. 3)



➤ Read a barcode to the text-entry field of the application

1. Find the scan icon on the keyboard and tap on the icon.
2. The camera viewer will open and then focus on the barcode. The camera will automatically read the barcode and send the barcode data to the text-entry field of the application.



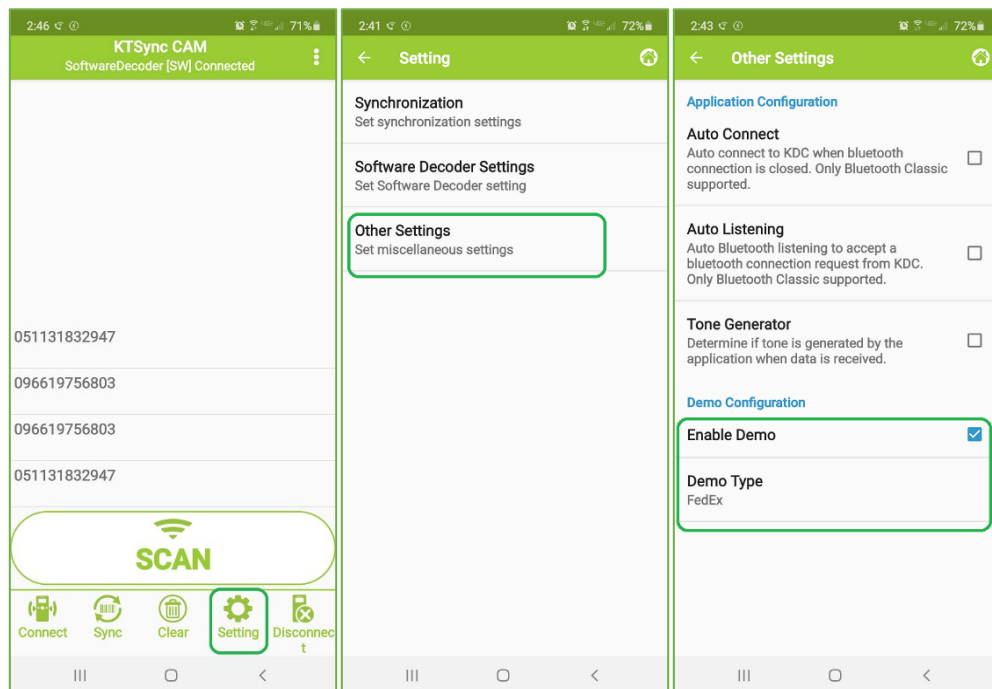
KTSync CAM Demo Feature (Scan & Search)

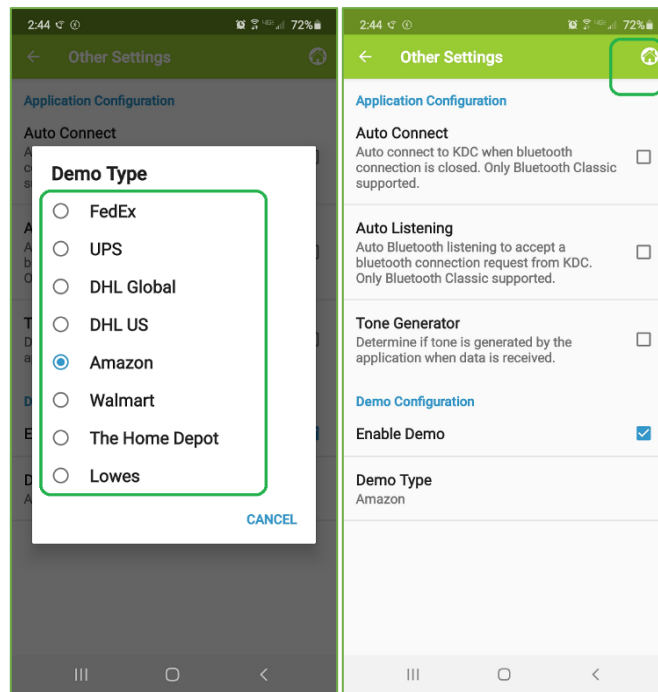
➤ Purpose

1. When you scan any barcode on any product or any logistics tracking package, the selected retail/logistics website pops up and shows the searched result or the tracking information.

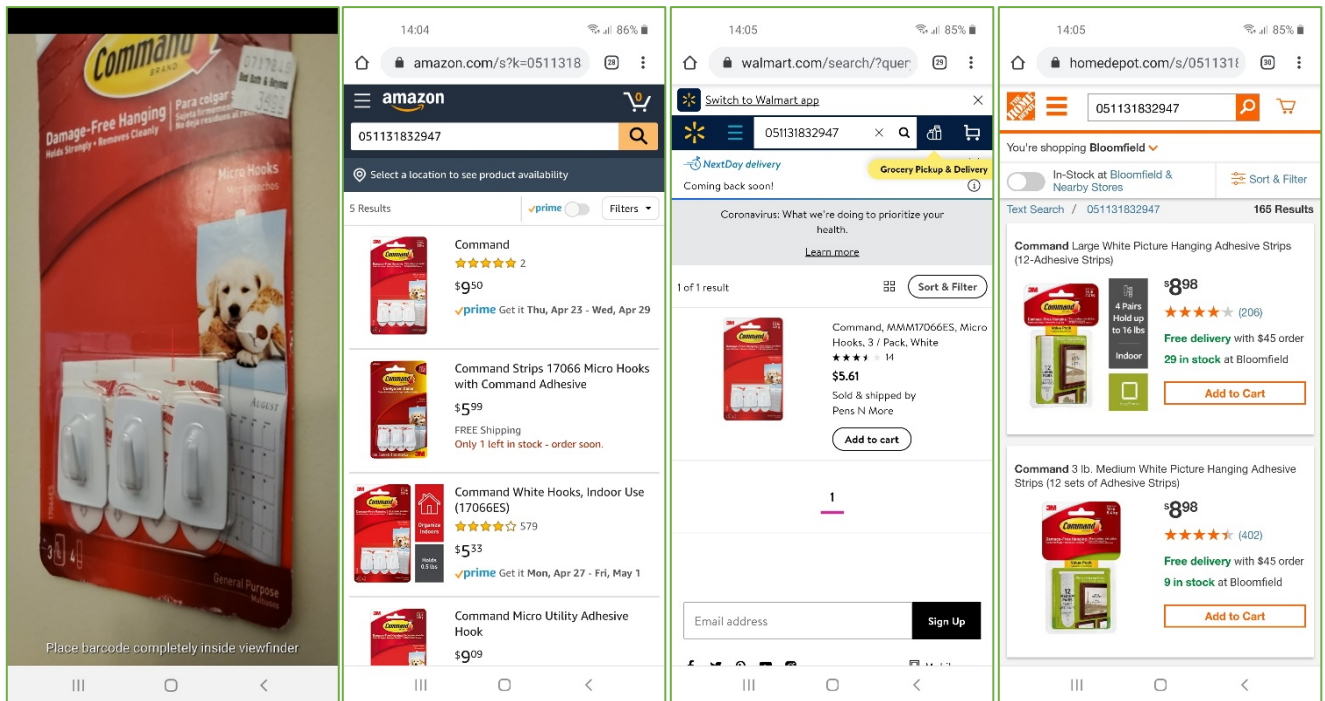
➤ How to test

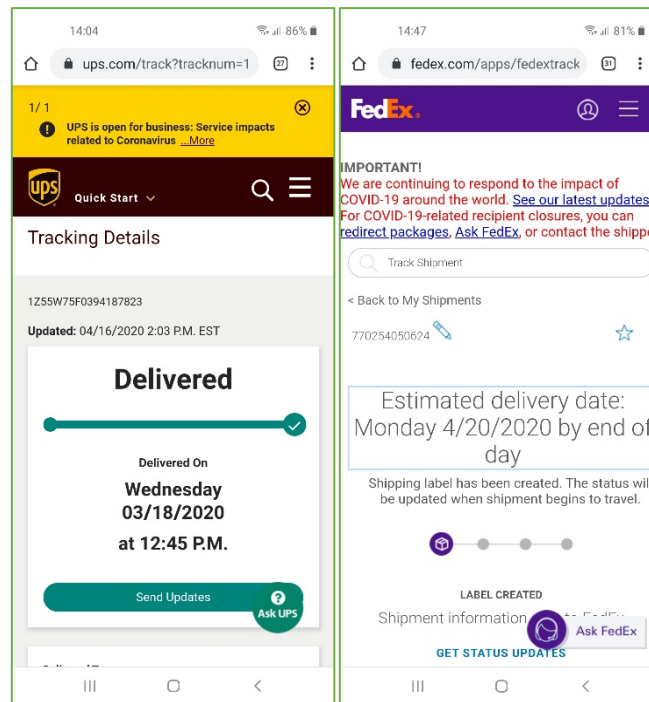
1. Enable Demo Mode (Settings → Other Settings → Check "Enable Demo")
2. Select demo type (demo store): FedEx, UPS, DHL Global, DHL US, Amazon, Walmart, The Home Depot, Lowes. (Settings → Other Settings → Demo Type) And tap "Home" icon at the right upper corner.





3. Now scan any barcode and the selected store website will pop up with a searched result.





4. There are some example barcodes on the next page.

Sample Barcodes for Scan & Search Testing

UPS



FedEx



Amazon/Walmart/Home Depot

